

WOODY

AMBERY

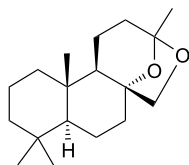
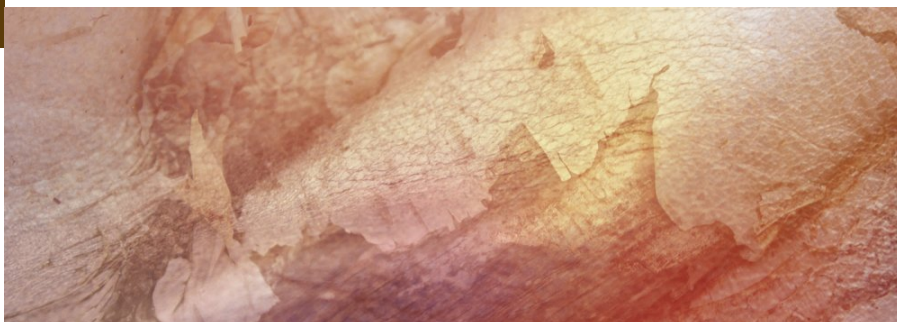
SYNTHETIC MOLECULE VIA BIOTECH

CAS NUMBER 0057345-19-4  
REACH NUMBER  
FEMA NUMBER

RENEWABLE CARBON  100%

BIODEGRADABILITY  Ultimately

[+]-[1R,4S,9S,10R,13S]-5,5,9,13-tetramethyl-14,16-dioxatetracyclo[11.2.1.0-1,10-.0-4,9-]hexadecane



### OLFACTIVE DESCRIPTION

Intense and very tenacious sensual dry woody note with an elegant ambery facet. This High Definition version is cleaner and stronger than the regular Z11.

### PERFUMERY USAGE

Z11 HD contains a minimum 95% of the best isomer (which is at least 3 times more than the regular quality). It is very useful to bring sensuality and linearity to fragrances.

### HISTORY

To offer alternatives to natural wood resources, Firmenich scientists developed a range of more affordable, sustainable offerings. The first woody molecule introduced was Z11 in 1961, then came POLYSANTOL®, the first sandalwood molecule in 1985.

### TENACITY

Lasts 1 month on a smelling strip

1 MONTH
3 WEEKS
2 WEEKS
1 WEEK
4 DAYS
3 DAYS
2 DAYS
1 DAY
6 HOURS
3 HOURS
2 HOURS
1 HOUR

### PHYSICO-CHEMICAL PROPERTIES

LOG P (MEASURED)	6.14
APPEARANCE	WET POWDER
FLASHPOINT	>100°C
VAPOUR PRESSURE	0.01 Pa at 20°C
MOLECULAR WEIGHT	278
BOILING POINT	> 40°C

### STABILITY & PERFORMANCE

RECOMMENDED APPLICATIONS	STABILITY	CONCENTRATION AVG - MAX	SUBSTANTIVITY & REMARKS			
FINE FRAGRANCES	■■■■■	N/A - N/A	HEART AND BASE NOTE			
SHAMPOO	■■■	N/A - N/A	WET	■■■	DRY	■■
SHOWER GEL	■■■	N/A - N/A	BLOOM	■■■		
SOAP	■■■	N/A - N/A	FOAM	■■■	DRY HAND	■■
DETERGENT	■■■■■	N/A - N/A	WET	■■■■■	DRY	■■■■■
SOFTENER	■■■■■	N/A - N/A	WET	■■■■■	DRY	■■■■■
APC	■■■■■	N/A - N/A				
CANDLE	■■■■■	N/A - N/A	COLD WAX	■■■■■	BURNING	■■■■■

### DID YOU KNOW ?

Originally made from Manool as a starting material, which was extracted from a tree (Manao) in New Zealand, now produced by biotechnology.