



WOODY

AMBERY

SYNTHETIC MOLECULE

1-(1,2,3,4,5,6,7,8-octahydro-2,3,8,8-tetramethyl-2-naphthyl)ethan-1-one and isomers

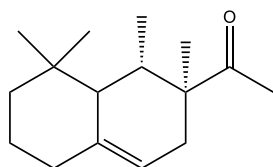


CAS NUMBER 0054464-57-2
REACH NUMBER 01-21119489989-04
FEMA NUMBER

RENEWABLE CARBON >50%

BIODEGRADABILITY Partially

GREEN CHEMISTRY SCORE 70 - 100%



OLFACTIVE DESCRIPTION

Intense warm, woody note. SYLVAMBER invites to a new journey through cedar and amber notes.

PERFUMERY USAGE

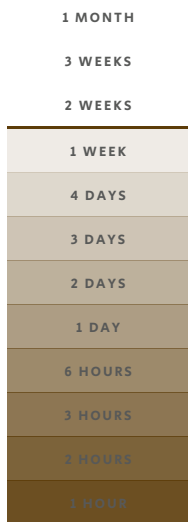
The exceptional tenacity of this foundation brings elegance and sophistication to any composition.

HISTORY

To offer alternatives to natural wood resources, Firmenich scientists developed a range of more affordable, sustainable offerings. The first woody molecule introduced was Z11 in 1961, then came POLYSANTOL®, the first sandalwood molecule in 1985.

TENACITY

Lasts 1 week on a smelling strip



PHYSICO-CHEMICAL PROPERTIES

LOG P (MEASURED) 5.55

APPEARANCE CLEAR LIQUID

FLASHPOINT >100°C

VAPOUR PRESSURE 0.35 Pa at 20°C

MOLECULAR WEIGHT 234

BOILING POINT -

STABILITY & PERFORMANCE

RECOMMENDED APPLICATIONS	STABILITY	CONCENTRATION AVG - MAX	SUBSTANTIVITY & REMARKS			
FINE FRAGRANCES	■■■	6% - 20%				
SHAMPOO	■■■■	0,7% - 4%	WET	■■■	DRY	■■■
SHOWER GEL	■■■■	5% - 14%	BLOOM	■■■		
SOAP	■■■	3% - 9%	FOAM	■■■	DRY HAND	■■■
DETERGENT	■■■■	2% - 7%	WET	■■■	DRY	■■■
SOFTENER	■■■■	3% - 6%	WET	■■■	DRY	■■■
APC	■■■	1% - 4%				
CANDLE	■■■	3% - 6%	COLD WAX		BURNING	

DID YOU KNOW ?