

WOODY

AMBERY

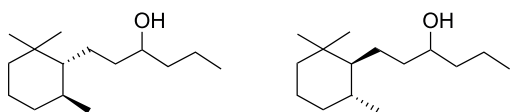
SYNTHETIC MOLECULE

CAS NUMBER 0070788-30-6
REACH NUMBER 01-2120085416-52
FEMA NUMBER

BIODEGRADABILITY  Readily

GREEN CHEMISTRY SCORE  50 - 70%

Cyclohexanepropanol, 2,2,6-trimethyl-, alpha.-propyl-



OLFACTIVE DESCRIPTION

Powerful dry woody and ambery note.

PERFUMERY USAGE

A cedarwood ambery note that gives effects to the complete olfactive pyramid from top to base.

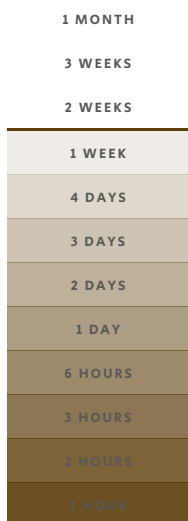
NORLIMBANOL® enhances fresh top notes and the tenacity of fragrances in all applications.

HISTORY

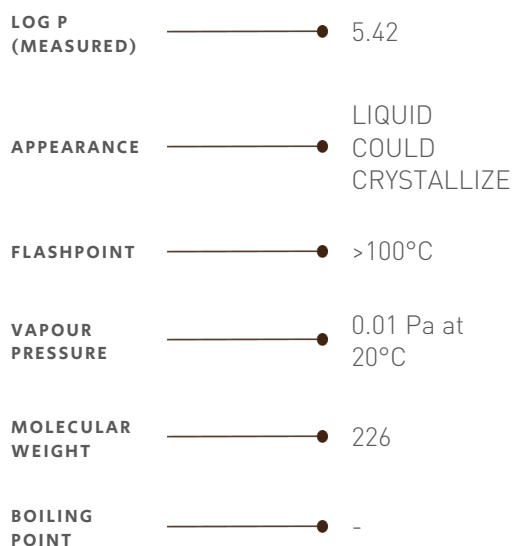
To offer alternatives to natural wood resources, Firmenich scientists developed a range of more affordable, sustainable offerings. The first woody molecule introduced was Z11 in 1961, then came POLYSANTOL®, the first sandalwood molecule in 1985.

TENACITY

Lasts 1 week on a smelling strip



PHYSICO-CHEMICAL PROPERTIES



STABILITY & PERFORMANCE

RECOMMENDED APPLICATIONS	STABILITY	CONCENTRATION AVG - MAX	SUBSTANTIVITY & REMARKS	
FINE FRAGRANCES	■■■■	0,8% - 4%	HEART AND BASE NOTE	
SHAMPOO	■■■■	0,3% - 1,0%	WET ■■■	DRY ■■
SHOWER GEL	■■■	0,3% - 1%	BLOOM ■■■	
SOAP	■■■■	0,2% - 0,9%	FOAM ■■■	DRY HAND ■■
DETERGENT	■■■	0,2% - 0,5%	WET ■■■	DRY ■■
SOFTENER	■■■	0,3% - 0,9%	WET ■■■■	DRY ■■■
APC	■■■	0,1% - 0,4%		
CANDLE	■■■	0,2% - 1%	COLD WAX ■■■	BURNING ■■■

DID YOU KNOW ?

NORLIMBANOL® is part of Firmenich iconic woody amber signatures, in the footsteps of Z11.